



SUCCESS STORY

Robots and Design Co., Ltd. (RND) is specialized in designing and manufacturing the robot systems for semi constructor manufacturing lines since 1999 in Korea. RND is the No.1 leading company in Korean Semiconductor robot field now. RND aims to supply the best solutions to meet customer's needs.

RND's business area extended to the new field by developing a dental milling machine in 2007. Dental business has been considered as a great potential growth. The experiences at the semiconductor robot field have been applied to Dental CAD/CAM system. RND have developed a specialized CAD/CAM system to mill dental model which is the essential step for all dental restoration.

RND have developed efficient CAD/CAM systems to meets customer's needs for various dental materials like Zirconia, WAX, PMMA, Glass ceramics, metal disc, Ti, Co-Cr, Ni-Cr, polyurethane and plaster.

A high-end Model CAM

“ There have been various CAM solutions for milling materials such as metal, Zirconia, WAX, glass ceramics. However none of CAM supplier has been faced to develop and supply the CAM solution to deal with dental models. It is a big challenge no one would try in the dental market. ”

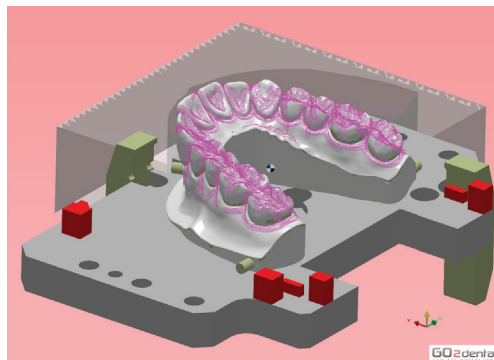
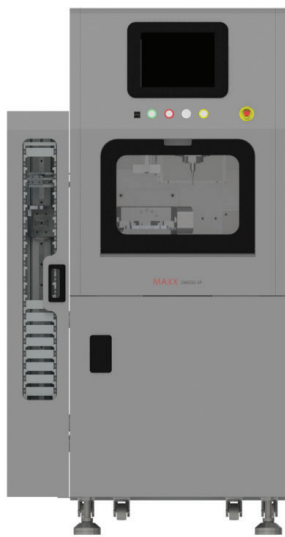
Hee Rak Beom, Executive VP



A successful partnership

RND decided to develop the most efficient CAM dedicated to dental models and looked for a partner among CAM solution providers.

“RND contacted various CAM solution providers, but no one was interested in such a new challenge. GO2cam International is the only CAM solution provider who listened to this requirement and made it successfully. We do appreciate GO2cam International’s constant wonderful support.”



Dental models milled by RND’s CAD/CAM will shorten and improve the time consuming works at dental labs remarkably. RND are mainly supplying Model CAM to customers in domestic and overseas market.



ORTHOTECH DENTAL LABORATORY

A-3-3 Vantage,
Jalan Desiran Tanjung,
10470 Tanjung Tokong,
Penang, Malaysia
www.orthotech.asia